

Promes PR-20SFP 1.25Gbps SFP MODUL

promes
electronic security



1.25Gbps'ye kadar veri hızını destekleyen, yüksek performanslı uygun maliyetli, düşük güç harcayan SFP Modül.

Düşük titreşim ve yüksek hassasiyet

- 1310nm FP/1550nm DFB LD ve PIN/TIA alıcı
- TX_DIS kontrol, TX-FAULT ve RX_LOS monitor işlevleri içerir.
- Cihaz Class I lazer güvenliği uyumludur

Teknik Özellikler

Uygulama	İletim mesafesi	20Km kadar
Gigabit ethernet	Modül Türü:	P: SFP
Fiber kanal		F: SFF
Anahtarlamalı arka panel uygulamaları		G: GBIC
Router/Sunucu bağlantı		9: 1*9
Özellikler		X: XFP
IEEE802.3z uyumlu	Mesafe	3: 300/500m S: 2km
SFP MSA ve SFF8472 uyumlu		1: 10km 2: 20km
1.25Gbps 'a kadar veri hızı		4: 40km 6: 60km
LC optik bağlantı		8: 80km X: over 100km
1310nm FP/1550nm DFB LD ve PIN fotodedektör		
Anlık çalışma voltajı 3.3V		
Depo sıcaklığı 0 °C ~ +70 °C		
Nem Max 95%		
Çalışma voltajı 3.1V~3.5V		

promes
electronic security



Perpa A Blok 8. Kat No: 823-825 Şişli / İSTANBUL
0212 221 3411 www.promesguvenlik.com

Promes Güvenlik Sistemleri ürün ve ürün özelliklerinde değişiklik yapma hakkını saklı tutar. En güncel veriler için firmamıza başvurun.

1.25Gbps SFP Transceiver with DDMI

PR-20SFP



Description: The transceiver is a low power, high performance, cost effective module supporting data-rate up to 1.25Gbps. The low jitter and high sensitivity are distinguished features with 1310nm FP/1550nm DFB LD and PIN/TIA receiver. It incorporates TX_DIS control, TX-FAULT and RX_LOS monitor functions. The devices are Class I laser safety compliant.

Application:

- Gigabit Ethernet
- Fiber Channel
- Switched backplane applications
- Router/Server interface
- Other optical links

Feature:

- Compliant with IEEE802.3z
- Compliant with SFP MSA and SFF8472
- Up to 1.25Gbps data rate
- LC optical interface
- 1310nm FP/1550nm DFB LD and PIN photodetector
- Rated Working Voltage: 3.3V

Absolute Maximum Ratings

Operation	Parameter	Symbol	Min.	Max.	Unit
	Storage Temperature	Tst	-40	+85	°C
	Storage Relative Humidity	RH _s	-	95	%
	Supply Voltage	Vcc	0	6	V
	Voltage on any input/output pin	V _{IO}	0	VCC	V

Environment:

Parameter	Symbol	Min.	Max.	Unit
Supply Voltage	V_{CC}	3.1	3.5	V
Ambient Operating Temperature	T_A	0	70	°C

Performance Specification

Transmitter Characteristics						
Parameter	Symbol	Min.	Typ.	Max.	Unit	Note
Supply Voltage	V_{CC}	3.1	3.3	3.5	V	
Differential Input Voltage	V_{IN}	400	-	1600	mV	
Data Rate	Rate	-	1.0625/1.25	-	Gbps	
Optical Output Power	P_o	-9	-	-3	dBm	
Extinction Ratio	ER	9	-	-	dB	
Central Wavelength	λ	1270	1310	1355	nm	YXF-P122-LCD
		1530	1550	1570		YXF-P132-LCD
RMS Spectral Width	$\Delta\lambda$	-	-	3	nm	YXF-P122-LCD
Bandwidth@-20dB	σ	-	-	1	nm	YXF-P132-LCD
SMSR	SMSR	30	-	-	dB	
Eye Diagram	IEEE802.3z					

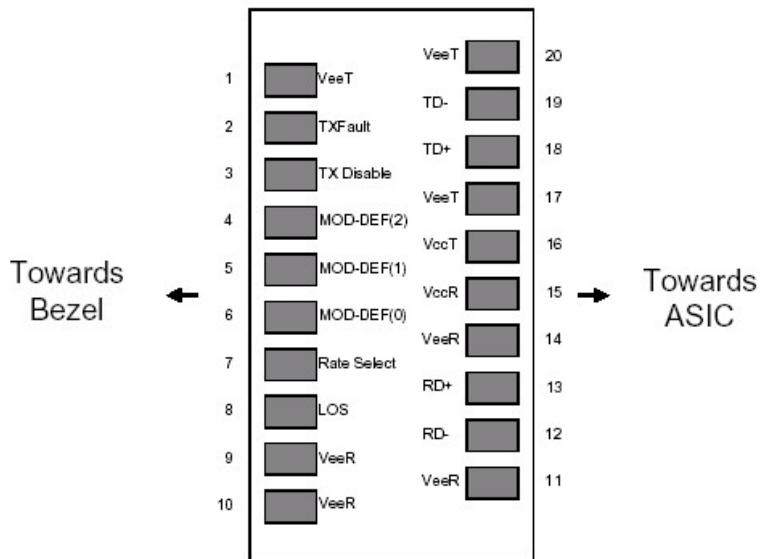
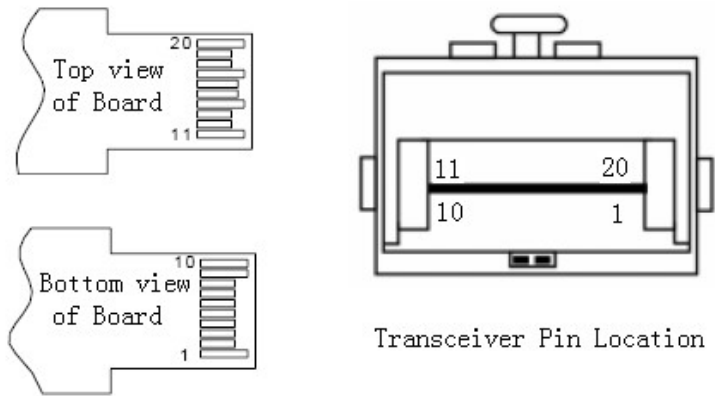
Receiver Characteristics						
Parameter	Symbol	Min.	Typ.	Max.	Unit	Note
Supply Voltage	V_{CC}	3.1	3.3	3.5	V	
Differential Output Voltage	V_{OUT}	400	-	2000	mV	
Data Rate	Rate	-	1.25	-	Gbps	

Sensitivity	S	-	-	-25	dBm	1
Optical Input Overload	P _{OL}	0	-	-	dBm	
Central Wavelength	λ	1270	1310	1355	nm	YXF-P122-LCD
		1530	1550	1570		YXF-P132-LCD
LOS (Loss of Signal)	Optical Decreased	-37	-	-	dBm	
	Optical Increased	-	-	-27	dBm	
LOS Hysteresis	P _H	0.5	-	5	dB	

Notes:

1. Average received power where the BER = 10^{-12} , measured with a 2⁷-1 NRZ test pattern..

Transceiver Pin Locations



Pin Descriptions

Pin	Name	Description	Plug Sequence	Note
1	VEET	Transmitter Ground	1	
2	TX Fault	Transmitter Fault Indication	3	1
3	TX Disable	Transmitter Disable	3	2
4	MOD-DEF2	Module Definition 2	3	3
5	MOD-DEF1	Module Definition 1	3	3
6	MOD-DEF0	Module Definition 0	3	3
7	Rate Select	Not Connected	3	
8	LOS	Loss of Signal	3	4
9	VeeR	Receiver Ground	1	
10	VeeR	Receiver Ground	1	
11	VeeR	Receiver Ground	1	
12	RD-	Inverse Received Data Out	3	5
13	RD+	Received Data Out	3	5
14	VeeR	Receiver Ground	1	
15	VccR	Receiver Power	2	

16	VccT	Transmitter Power	2	
17	VeeT	Transmitter Ground	1	
18	TD+	Transmit Data In	3	6
19	TD-	Inverse Transmit Data In	3	6
20	VeeT	Transmitter Ground	1	

Notes:

1. TX Fault is an open collector output, which should be pulled up with a 4.7k~10kΩ resistor on the host board to a voltage between 2.0V and Vcc+0.3V. Logic 0 indicates normal operation; logic 1 indicates a laser fault of some kind. In the low state, the output will be pulled to less than 0.8V.
2. TX Disable is an input that is used to shut down the transmitter optical output. It is pulled up within the module with a 4.7k~10kΩ resistor. Its states are:
 - Low (0~0.8V): Transmitter on (>0.8V, <2.0V): Undefined
 - High (2.0~3.5): Transmitter Disabled
 - Open: Transmitter Disabled
3. MOD-DEF 0,1,2 are the module definition pins. They should be pulled up with a 4.7k~10kΩ resistor on the host board. The pull-up voltage shall be VccT or VccR.
 - MOD-DEF 0 is grounded by the module to indicate that the module is present
 - MOD-DEF 1 is the clock line of two wire serial interface for serial ID
 - MOD-DEF 2 is the data line of two wire serial interface for serial ID
4. LOS is an open collector output, which should be pulled up with a 4.7k~10kΩ resistor on the host board to a voltage between 2.0V and Vcc+0.3V. Logic 0 indicates normal operation; logic 1 indicates loss of signal. In the low state, the output will be pulled to less than 0.8V.
5. These are the differential receiver outputs. They are AC-coupled 100Ω differential lines which should be terminated with 100Ω (differential) at the user SERDES.
6. These are the differential transmitter inputs. They are AC-coupled, differential lines with 100Ω differential termination inside the module

Digital Diagnostic Monitor Characteristics:

Parameter.	Range	Min	Unit
Tx Output Power Accuracy	-12~0	± 3.0	dBm
Rx Input Power Accuracy	-5~-25	± 3.0	dBm
Laser Bias Current Accuracy	5~80	± 1 0	%
Transceiver Internal Temperature Accuracy	-20~80	± 3.0	°C
Transceiver Internal Supply Voltage Accuracy	3.1~3.5	± 0.1	V

Serial ID Memory Contents: (A0H)

Data Address	Length (Byte)	Name of Length	Description and Contents
Base ID Fields			
0	1	Identifier	Type of Serial transceiver (03h=SFP)
1	1	Reserved	Extended identifier of type serial transceiver (04h)
2	1	Connector	Code of optical connector type (07=LC)
3-10	8	Transceiver	Gigabit Ethernet 1000Base-LX & Fiber Channel
11	1	Encoding	8B10B (01h)
12	1	BR,Nominal	Nominal baud rate, unit of 100Mbps
13	1	Reserved	(0000h)
14	1	Length(9um)	Link length supported for 9/125um fiber, units of km(14h)
15	1	Length(9um)	Link length supported for 9/125um fiber, units of 100m(C8h)
16	1	Length(50um)	Link length supported for 50/125um fiber, units of 10m(00h)

17	1	Length(62.5um)	Link length supported for 62.5/125um fiber, units of 10m(00h)
18	1	Length(Copper)	Link length supported for copper, units of meters(00h)
19	1	Reserved	
20-35	16	Vendor Name	SFP vendor name: YXFiber
36	1	Reserved	
37-39	3	Vendor OUI	SFP transceiver vendor OUI ID
40-55	16	Vendor PN	Part Number: "YXF-P12 (3) 2-LCD" (ASCII)
56-59	4	Vendor rev	Revision level for part number
60-62	3	Reserved	
63	1	CCID	Least significant byte of sum of data in address 0-62
Extended ID Fields			
64-65	2	Option	Indicates which optical SFP signals are implemented (001Ah = LOS, TX_FAULT, TX_DISABLE all supported)
66	1	BR, max	Upper bit rate margin, units of %
67	1	BR, min	Lower bit rate margin, units of %
68-83	16	Vendor SN	Serial number (ASCII)
84-91	8	Date code	YXFiber Manufacturing date code
92	1	DDMI Type	Implemented with internal calibration and received power measurement type by Avg. power(68)
93	1	Enhanced options	Alarm/Warning flags monitor are implemented(F0)
94	1	SFF-8472 compliant	SFF-8472 compliant with revision 9.5(02)
95	1	CCEX	Check code for the extended ID Fields (addresses 64 to 94)
Vendor Specific ID fields			
96-127	32	Readable	YXFiber specific date, read only

Serial ID Memory Contents: (A2H)

Address	# Bytes	Name	Description
00-01	2	Temp High Alarm	MSB at low address(85°C)
02-03	2	Temp Low Alarm	MSB at low address(-40°C)
04-05	2	Temp High Warning	MSB at low address(70°C)
06-07	2	Temp Low Warning	MSB at low address(-20°C)
08-09	2	Voltage High Alarm	MSB at low address(3.6V)
10-11	2	Voltage Low Alarm	MSB at low address(3.0 V)
12-13	2	Voltage High Warning	MSB at low address(3.5V)
14-15	2	Voltage Low Warning	MSB at low address(3.1V)
16-17	2	Bias High Alarm	MSB at low address(80mA)
18-19	2	Bias Low Alarm	MSB at low address(5mA)
20-21	2	Bias High Warning	MSB at low address(50mA)
22-23	2	Bias Low Warning	MSB at low address(20mA)
24-25	2	TX Power High Alarm	MSB at low address(0dBm)
26-27	2	TX Power Low Alarm	MSB at low address(-12dBm)
28-29	2	TX Power High Warning	MSB at low address(-3dBm)
30-31	2	TX Power Low Warning	MSB at low address(-9dBm)
32-33	2	RX Power High Alarm	MSB at low address(0dBm)
34-35	2	RX Power Low Alarm	MSB at low address(-26dBm)
36-37	2	RX Power High Warning	MSB at low address(-5dBm)
38-39	2	RX Power Low Warning	MSB at low address(-23dBm)
40-55	16	Reserved	Reserved for future monitored quantities
Address	# Bytes	Name	Description
56-59	4	Rx_PWR(4)	Single precision floating point calibration data - Rx optical power. Bit 7 of byte 56 is MSB. Bit 0 of byte 59 is LSB.

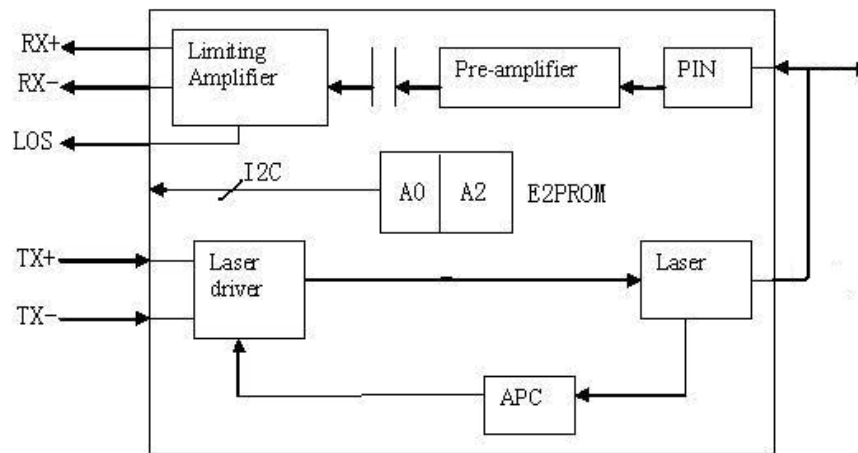
60-63	4	Rx_PWR(3)	Single precision floating point calibration data - Rx optical power. Bit 7 of byte 60 is MSB. Bit 0 of byte 63 is LSB.
64-67	4	Rx_PWR(2)	Single precision floating point calibration data, Rx optical power. Bit 7 of byte 64 is MSB, bit 0 of byte 67 is LSB.
68-71	4	Rx_PWR(1)	Single precision floating point calibration data, Rx optical power. Bit 7 of byte 68 is MSB, bit 0 of byte 71 is LSB.
72-75	4	Rx_PWR(0)	Single precision floating point calibration data, Rx optical power. Bit 7 of byte 72 is MSB, bit 0 of byte 75 is LSB.
76-77	2	Tx_I(Slope)	Fixed decimal (unsigned) calibration data, laser bias current. Bit 7 of byte 76 is MSB, bit 0 of byte 77 is LSB.
78-79	2	Tx_I(Offset)	Fixed decimal (signed two's complement) calibration data, laser bias current. Bit 7 of byte 78 is MSB, bit 0 of byte 79 is LSB
80-81	2	Tx_PWR(Slope)	Fixed decimal (unsigned) calibration data, transmitter coupled output power. Bit 7 of byte 80 is MSB, bit 0 of byte 81 is LSB.
82-83	2	Tx_PWR(Offset)	Fixed decimal (signed two's complement) calibration data, transmitter coupled output power. Bit 7 of byte 82 is MSB, bit 0 of byte 83 is LSB.
84-85	2	T(Slope)	Fixed decimal (unsigned) calibration data, internal module temperature. Bit 7 of byte 84 is MSB, bit 0 of byte 85 is LSB.
86-87	2	T(Offset)	Fixed decimal (signed two's complement) calibration data, internal module temperature. Bit 7 of byte 86 is MSB, bit 0 of byte 87 is LSB.
88-89	2	V(Slope)	Fixed decimal (unsigned) calibration data, internal module supply voltage. Bit 7 of byte 88 is MSB, bit 0 of byte 89 is LSB.
90-91	2	V(Offset)	Fixed decimal (signed two's complement) calibration data, internal module supply voltage. Bit 7 of byte 90 is MSB. Bit 0 of byte 91 is LSB.
92-95	4	Reserved	Reserved
Byte	Bit	Name	Description
Converted analog values. Calibrated 16 bit data			

96	All	Temperature MSB	Internally measured module temperature.
97	All	Temperature LSB	
98	All	Vcc MSB	Internally measured supply voltage in transceiver.
99	All	Vcc LSB	
100	All	TX Bias MSB	Internally measured TX Bias Current.
101	All	TX Bias LSB	
102	All	TX Power MSB	Measured TX output power.
103	All	TX Power LSB	
104	All	RX Power MSB	Measured RX input power.
105	All	RX Power LSB	
106	All	Reserved MSB	Reserved for 1st future definition of digitized analog input
107	All	Reserved LSB	Reserved for 1st future definition of digitized analog input
108	All	Reserved MSB	Reserved for 2nd future definition of digitized analog input
109	All	Reserved LSB	Reserved for 2nd future definition of digitized analog input
Optional Status/Control Bits			
110	7	TX Disable State	Digital state of the TX Disable Input Pin. Not supported.
110	6	Soft TX Disable	Read/write bit that allows software disable of laser. Not supported.
110	5	Reserved	
110	4	RX Rate Select State	Digital state of the SFP RX Rate Select Input Pin. Not supported.
110	3	Soft RX Rate Select	Read/write bit that allows software RX rate select.
			Not supported.
110	2	TX Fault	Digital state of the TX Fault Output Pin.
110	1	LOS	Digital state of the LOS Output Pin.
110	0	Data Ready	Indicates transceiver has achieved power up and data is ready
111	7-0	Reserved	Reserved.

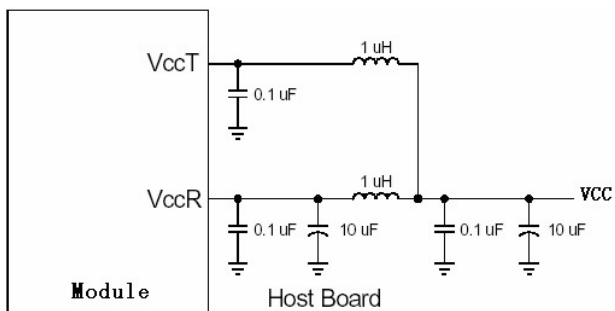
Byte	Bit	Name	Description
Reserved Optional Alarm and Warning Flag Bits			
112	7	Temp High Alarm	Set when internal temperature exceeds high alarm level.
112	6	Temp Low Alarm	Set when internal temperature is below low alarm level.
112	5	Vcc High Alarm	Set when internal supply voltage exceeds high alarm level.
112	4	Vcc Low Alarm	Set when internal supply voltage is below low alarm level.
112	3	TX Bias High Alarm	Set when TX Bias current exceeds high alarm level.
112	2	TX Bias Low Alarm	Set when TX Bias current is below low alarm level.
112	1	TX Power High Alarm	Set when TX output power exceeds high alarm level.
112	0	TX Power Low Alarm	Set when TX output power is below low alarm level.
113	7	RX Power High Alarm	Set when Received Power exceeds high alarm level.
113	6	RX Power Low Alarm	Set when Received Power is below low alarm level.
113	0~5	Reserved Alarm	
114	All	Reserved	
115	All	Reserved	
116	7	Temp High Warning	Set when internal temperature exceeds high warning level.
116	6	Temp Low Warning	Set when internal temperature is below low warning level.
116	5	Vcc High Warning	Set when internal supply voltage exceeds high warning level.
116	4	Vcc Low Warning	Set when internal supply voltage is below low warning level.
116	3	TX Bias High Warning	Set when TX Bias current exceeds high warning level.
116	2	TX Bias Low Warning	Set when TX Bias current is below low warning level.
116	1	TX Power High Warning	Set when TX output power exceeds high warning level.

116	0	TX Power Low Warning	Set when TX output power is below low warning level.
117	7	RX Power High Warning	Set when Received Power exceeds high warning level.
117	6	RX Power Low Warning	Set when Received Power is below low warning level.
117	0~5	Reserved Warning	
118	All	Reserved	
119	All	Reserved	
120-127	8	Vendor Specific	00h.
128-255	128		

Block Diagram



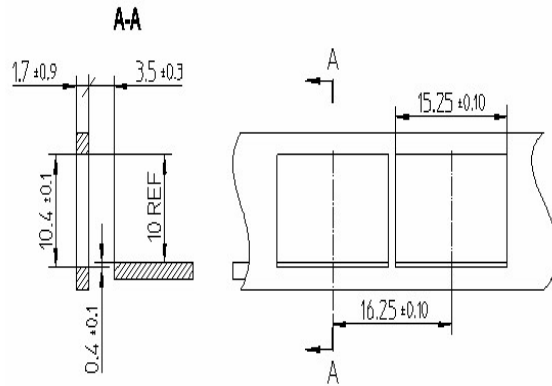
Power Supply



The Transceiver includes internal circuit components to filter power supply noise. Under some conditions of EMI and power supply noise, external power supply filtering may be necessary. If receiver sensitivity is found to be degraded by power supply noise, the filter network illustrated in the following figure may be used to improve performance. The values of the filter components are

general recommendations and may be changed to suit a particular system environment. Shielded inductors are recommended.

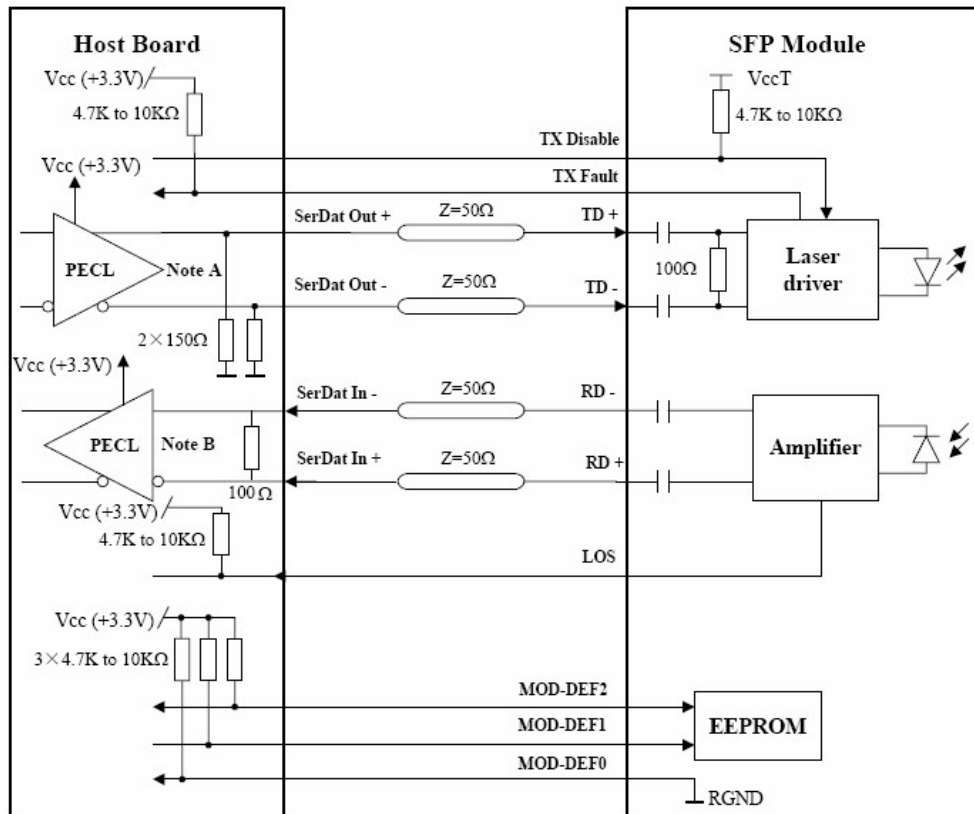
Recommended Front Panel Layout Opening for LC



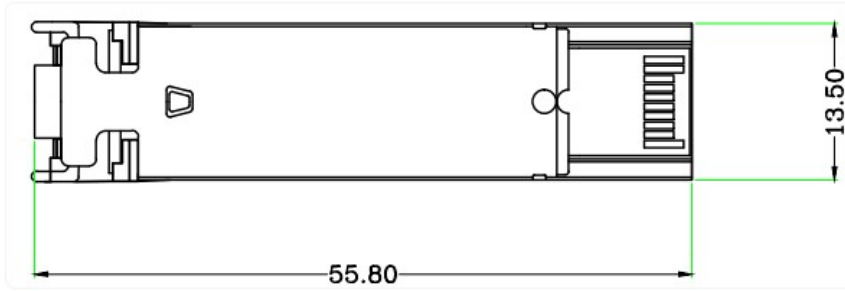
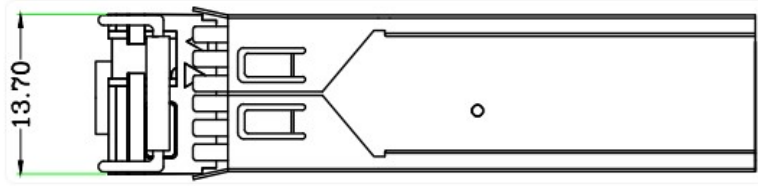
Recommended

Application

Circuits



Outline Specification



X₁X₂X₃X₄ - X₅X₆X₇

