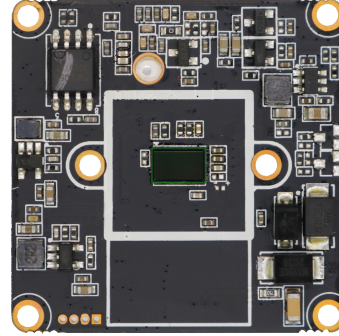
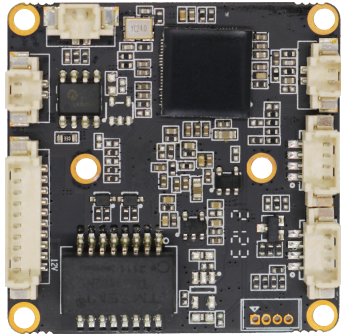


## F4G intelligent sound and light warning camera



### PR-EL4AS-B technical features

1. Support H264, H.265 Encoding format

    Mainstream: 4MP (2560\*1440) / 3MP (2304\*1296) / 2MP (1920\*1080) / 1MP (1280\*720);

    substream: 448P (800\*448) / D1 (704\*576) / 360P (640\*360) / CIF (352\*288);

2. Support dual stream output at the same time;
3. Support digital wide dynamic range, 3D noise reduction, backlight compensation, white balance, suitable for different monitoring environments;
4. Support ONVIF, can access third-party NVR;
5. Support screen occlusion, which can cover the privacy area;
6. Support OSD character overlay function, support network time synchronization;
7. Support audio input and output, two-way intercom, audio and video synchronization;
8. Supports a variety of light board types, including hard light-sensitive and soft light-sensitive light boards;
9. Support humanoid detection function;
10. Support linkage sound and light alarm;
11. Support automatic maintenance function;
12. Remote monitoring with mobile phone (iOS, android), support computer remote monitoring;



Function	
Model	PR-EL4AS-B
Chipset	FH8852V200+GC2063
Lens	3.6mm
Housing material	Metal
White balance	Support automatic white balance
BLC	Support backlight compensation
Digital noise reduction	Support 3D noise reduction
Wide dynamic range	Support digital wide dynamic range
Motion Detection	Support
Privacy mask	Support
Mirror image	Support
OSD	Support OSD setting, Support OSD drag
automatic maintenance	Support
Smart function	
Human detection	Support humanoid detection function, which can detect humanoid and give intelligent alarm.
Voice broadcast	Supports voice broadcast after detecting a human figure.
Light alarm	Support linkage light alarm after human figure is detected.
VIDEO	
Compression	H.264, H.265
Resolution	Mainstream: 4MP(2560*1440), 3MP(2304*1296), 2MP(1920*1080), 1MP(1280*720)
	Substream: 448P(800*448)/D1(704*576)/360P(640*360)/CIF(352*288)
Video frame rate	4 million 25 frames, 3 million 30 frames
Video adjustment	Brightness, saturation, hue, contrast, sharpness adjustment
Network	
Ethernet	RJ-45 10M/100M adaptive
Protocol	ONVIF, P2P, CGI, HTTP, TCP/IP, IPv4, RTSP, UDP, NTP, DHCP, DNS, IP Filter
Access agreement	ONVIF protocol/proprietary protocol/CGI

Maximum number of connections	3 mainstream, 3 substream
Cilent	IOS, Android, Windows
Auido	
<b>Audio</b>	G.711U、G711A
<b>Audio input</b>	<b>Support</b>
Audio output	Support
General specification	
Size	38x38 single board
Working environment	-30℃～+80℃
Power	DC12V / PoE