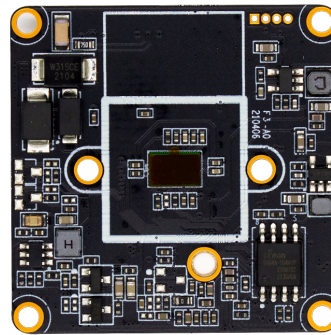
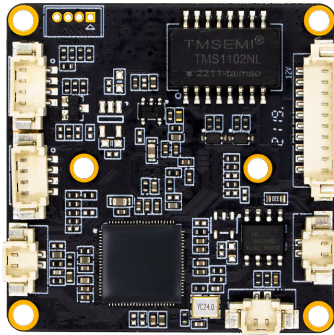


F4C Smart AI Camera



PR-EL4AS-D technical features

1. 1/3 » sensor;
2. Support H264, H.265 Encoding format
Mainstream :4MP (2560*1440)/3MP (2304*1296)/2MP (1920*1080)/1MP (1280*720);
Substream:448P (800*448)/D1 (704*576)/360P (640*360)/ CIF (352*288);
3. Support dual stream output at the same time;
4. Support electronic fence (humanoid) function, adjustable sensitivity, support humanoid detection frame and arming area frame display.;
5. Support electronic fence (humanoid) function, adjustable sensitivity, support humanoid detection frame and arming area frame display.
6. Support polygonal defense, and support the device to alarm after entering or leaving the warning area;
7. Can be linked with local sound and light alarm and video recorder alarm; **first choice with RS-N9909/9916 video recorder**
8. Support custom warning voice, can record sound upload;
9. Support digital wide dynamic range, 3D noise reduction, backlight compensation, white balance, suitable for different monitoring environments;
10. Support ONVIF protocol, can access third-party NVR;
11. Support OSD character overlay function, support network time synchronization;
12. Support audio input and output, two-way intercom, audio and video synchronization;
13. Supports a variety of light board types, including hard light-sensitive and soft light-sensitive light boards;
14. Support automatic maintenance function;
15. Support mobile phone remote monitoring (iOS, android), support computer remote monitoring;

Function	
Model	PR-EL4AS-D
Chipset	FH8852V200+GC2083
Lens	2.8mm
Housing material	Plastic
Day and night switch	Support day and night conversion (support optional IR-CUT)
White balance	Support automatic white balance
BLC	Support backlight compensation
Digital noise reduction	Support 3D noise reduction
Wide dynamic range	Support digital wide dynamic range
Motion Detection	Support
Mirror image	Support
OSD	Support OSD setting, Support OSD drag
Automatic maintenance	Support
Smart function	
Electric fence	Support detection of human figures, support polygonal defense area; support equipment alarm after entering or leaving the warning area
Voice broadcast	Support linkage voice broadcast, voice content can be customized recording
AI display	Support
Camera alarm function	Light alarm, voice broadcast, alarm output
Video recorder alarm linkage	Support linkage video recorder large screen, local voice, AI video, push and other functions
Video	
Compression	H. 264, H. 265
Resolution	Mainstream: 4MP (2560*1440), 3MP (2304*1296), 2MP (1920*1080), 1MP (1280*720)
	Substream: 448P (800*448) / D1 (704*576) / 360P (640*360) / CIF (352*288)
Video frame rate	4 million 20 frames, 3 million 30 frames
Video adjustment	Brightness, saturation, hue, contrast, sharpness adjustment
Network	

Ethernet	RJ-45 10M/100M adaptive
Protocol	ONVIF, P2P, CGI, HTTP, TCP/IP, IPv4, RTSP, UDP, NTP, DHCP, DNS, IP Filter
Access agreement	ONVIF protocol/proprietary protocol/CGI/28181
Maximum number of connections	3 mainstreams, 3 substreams
APP	P6slite(IOS, Android)
Client	Easyvms(Windows)
Audio	
Audio	G.711U、G711A
Audio input	Support
Audio output	Support
General specification	
Size	38x38 single board
Working environment	-30℃~+80℃
Power	DC12V 2A / PoE